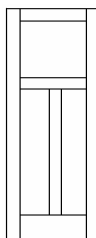
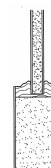


2 Panel Traditional Ogee Sticking - Square Panel 1-3/8"				3 Panel Traditional Ogee Sticking - Square Panel 1-3/8"			
Red Oak		UL Select Birch		Red Oak		UL Select Birch	
Doors	Bifolds	Doors	Bifolds	Doors	Bifolds	Doors	Bifolds
1'6" x 6'8"	2'0" x 6'7"	1'6" x 6'8"	2'0" x 6'7"	1'6" x 6'8"	2'0" x 6'7"	1'6" x 6'8"	2'0" x 6'7"
2'0" x 6'8"	2'6" x 6'7"	2'0" x 6'8"	2'6" x 6'7"	2'0" x 6'8"	2'6" x 6'7"	1'8" x 6'8"	2'6" x 6'7"
2'4" x 6'8"	3'0" x 6'7"	2'4" x 6'8"	3'0" x 6'7"	2'4" x 6'8"	3'0" x 6'7"	2'0" x 6'8"	3'0" x 6'7"
2'6" x 6'8"	4'0" x 6'7"	2'6" x 6'8"	4'0" x 6'7"	2'6" x 6'8"	4'0" x 6'7"	2'2" x 6'8"	4'0" x 6'7"
2'8" x 6'8"	5'0" x 6'7"	2'8" x 6'8"	5'0" x 6'7"	2'8" x 6'8"	5'0" x 6'7"	2'4" x 6'8"	5'0" x 6'7"
3'0" x 6'8"	6'0" x 6'7"	3'0" x 6'8"	6'0" x 6'7"	3'0" x 6'8"	6'0" x 6'7"	2'6" x 6'8"	6'0" x 6'7"
						2'8" x 6'8"	
						3'0" x 6'8"	

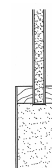


3 Panel Traditional Mission Sticking - Square Panel 1-3/8"					
Cherry		Poplar		Knotty Alder	
Doors	Bifolds	Doors	Bifolds	Doors	Bifolds
1'6" x 6'8"	2'0" x 6'7"	1'6" x 6'8"	2'0" x 6'7"	1'6" x 6'8"	2'0" x 6'7"
2'0" x 6'8"	2'6" x 6'7"	2'0" x 6'8"	2'6" x 6'7"	2'0" x 6'8"	2'6" x 6'7"
2'4" x 6'8"	3'0" x 6'7"	2'4" x 6'8"	3'0" x 6'7"	2'4" x 6'8"	3'0" x 6'7"
2'6" x 6'8"	4'0" x 6'7"	2'6" x 6'8"	4'0" x 6'7"	2'6" x 6'8"	4'0" x 6'7"
2'8" x 6'8"	5'0" x 6'7"	2'8" x 6'8"	5'0" x 6'7"	2'8" x 6'8"	5'0" x 6'7"
3'0" x 6'8"	6'0" x 6'7"	3'0" x 6'8"	6'0" x 6'7"	3'0" x 6'8"	6'0" x 6'7"

Doors - 4-3/8" Stiles & Top Rail, 7-5/8" Lock Rail, 9-1/8" Bottom Rail
 Bifolds - 2-3/16" Stiles, 4-3/8" Top Rail, 7-5/8" Lock Rail, 8-1/8" Bottom Rail,
 Johnson #1700 Series Hardware



Flat Panel
Ogee Sticking



Flat Panel
Mission Sticking