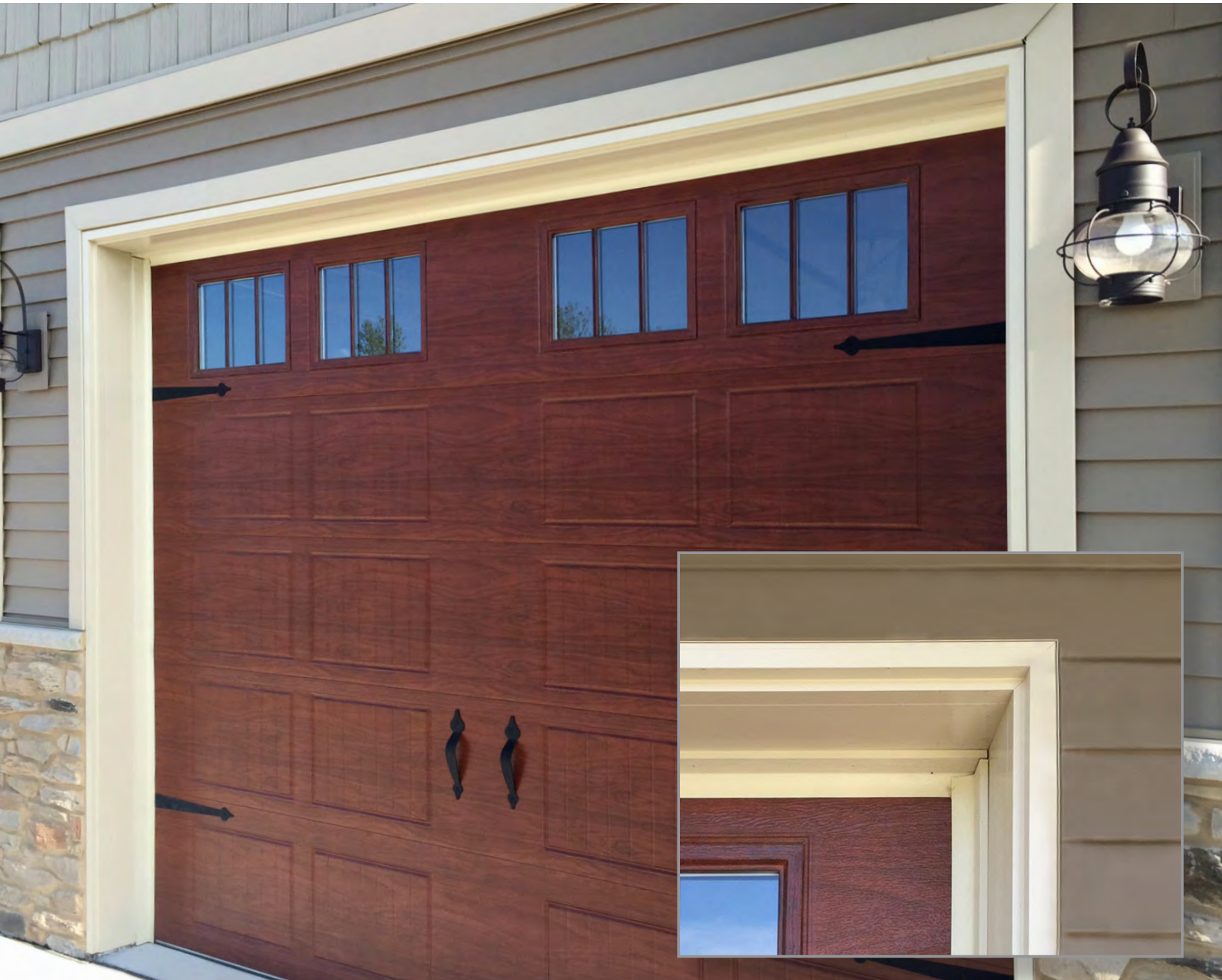
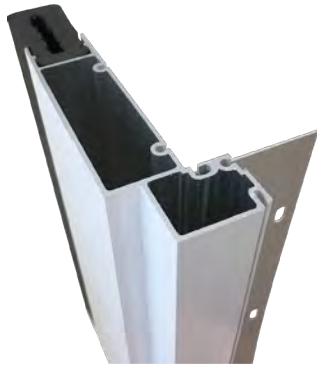


# PRO-SERIES ALUMINUM GARAGE DOOR FRAMES

THE LIFETIME SOLUTION TO PREFINISHED AND MAINTENANCE-FREE GARAGE DOOR FRAMES





Pro-Series Cutaway



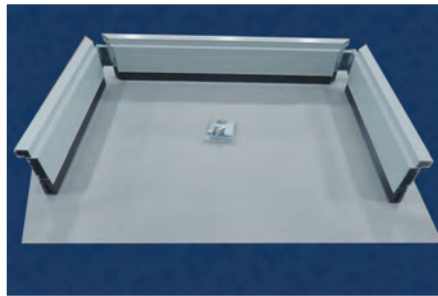
90° Square Corner



45° Clipped Corner



Arch Top



Pro-Series Exploded View

90° & 45° FRAMES | FEATURES:

- Easy installation - Five minutes to assemble, twenty minutes to install
- Available with 90° square or 45° clipped corners
- .062 (16 gauge) extruded aluminum for strength and durability - with composite insert
- Heavy-duty steel corner gussets for perfectly mitered corners
- No wood in frames means no rot, no water wicking, no warping, and no bug infestation
- Optional 3-1/2" flat casing and J-mould (both field applied)
- Compliments the FrontLine entry door cladding system
- Limited Lifetime Warranty

ARCH TOP FRAMES

- 10" rise standard; 12" rise optional
- Crownline nosing only

SIZES AND COLORS

- Stock sizes - 8', 9', 10', 16', and 18' widths; 7' and 8' heights
- Stock colors - White, Sandstone, Bahama Brown, Bronze, Terratone, Green, Almond, Eggshell, Beige, Wineberry and Black (Black available only in the 90° and 45° frames)
- Custom Sizes Available

DISTRIBUTED BY:



[www.frontlinebldg.com](http://www.frontlinebldg.com) | [sales@frontlinebldg.com](mailto:sales@frontlinebldg.com) | 920-393-1340